

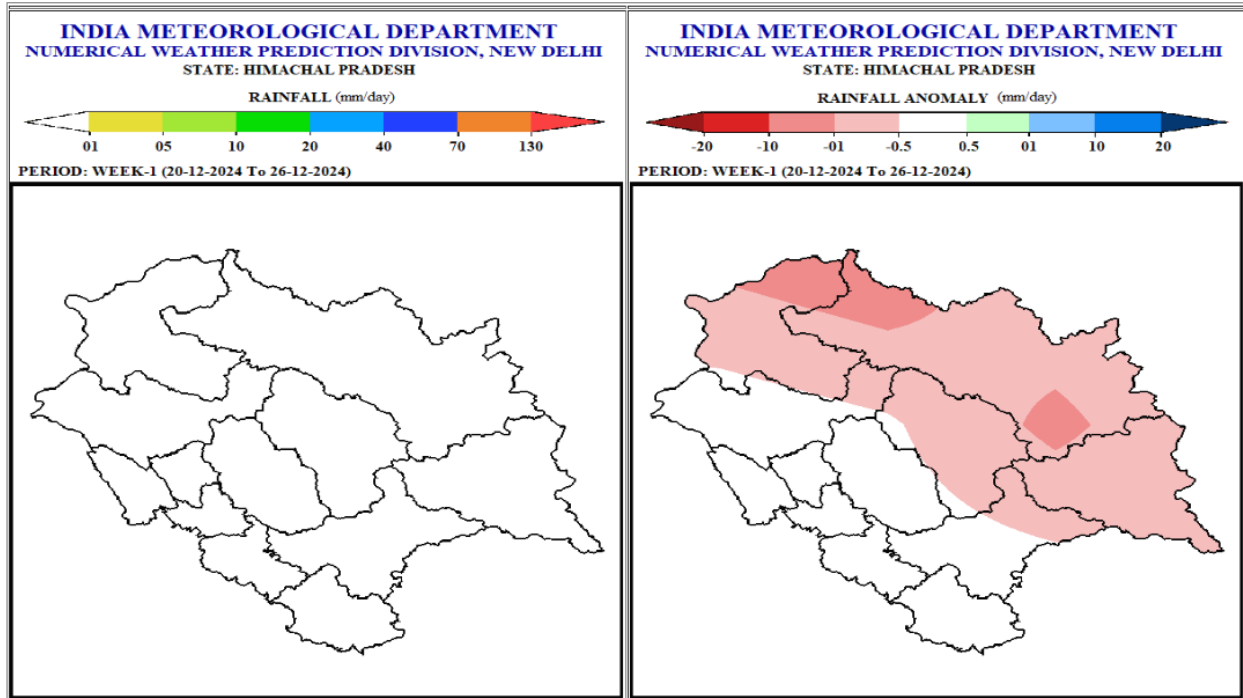
Extended Range Weather Forecast

Date:- 19.12.2024

Weather Forecasts and Warning for two weeks w.e.f. 20th December, 2024

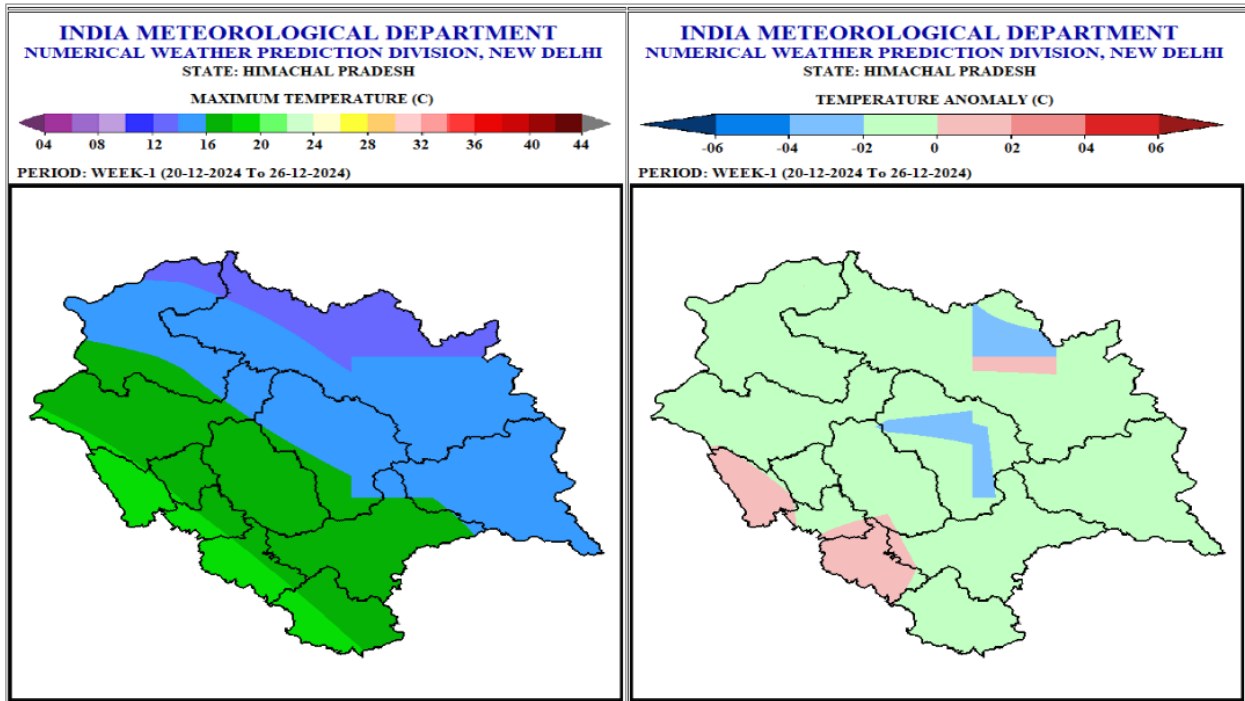
Week 1(20th December – 26th December) 2024

Rainfall



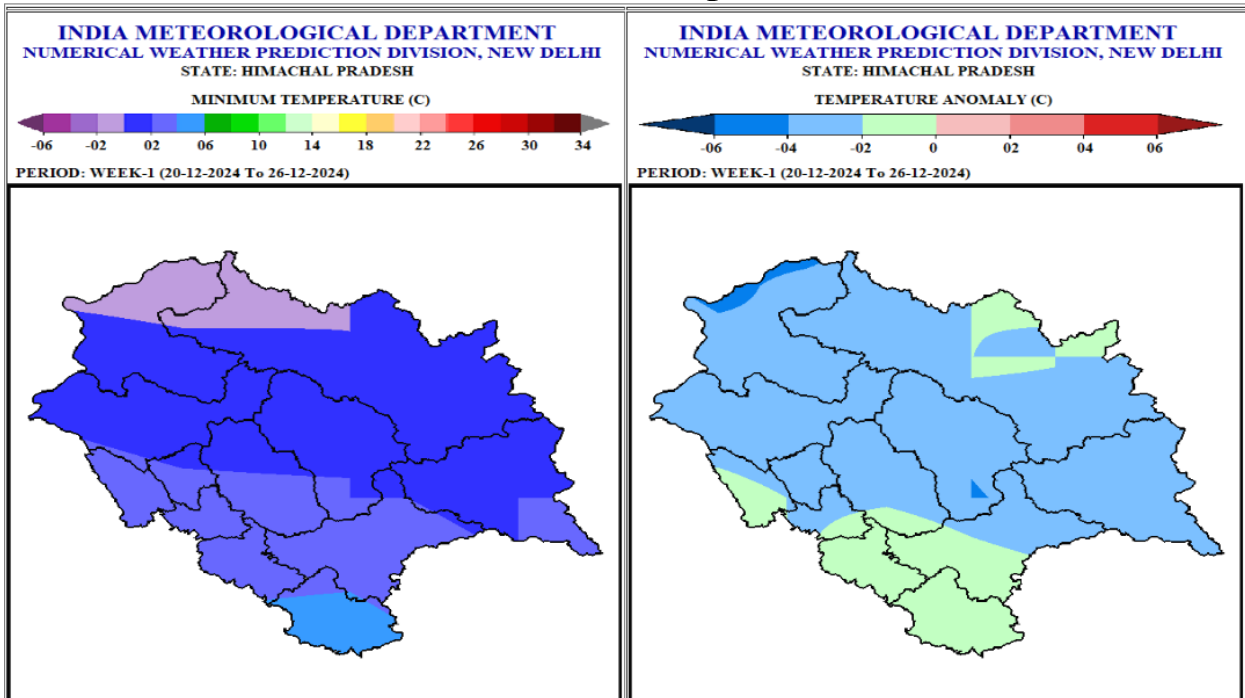
- Dry weather very likely over most parts of the state in the week 1.
- Rainfall anomaly very likely to be near normal over the most parts of the state except some parts of Lahaul-Spiti, Chamba districts where rainfall likely to be below normal in the week 1.

Maximum Temperatures



- Maximum Temperatures are very likely to be in the range of 14-16°C over most parts of the high hills except some parts of Lahaul-Spiti & Chamba districts where it likely to be in the range of 12-14°C; in the range of 14-18°C over most parts of mid hills & adjoining lower hills and in the range of 16-20°C over remaining parts of lower hills/plains in the week 1.
- Maximum Temperatures very likely to be normal to near normal over most parts of the state in the week 1.

Minimum Temperatures



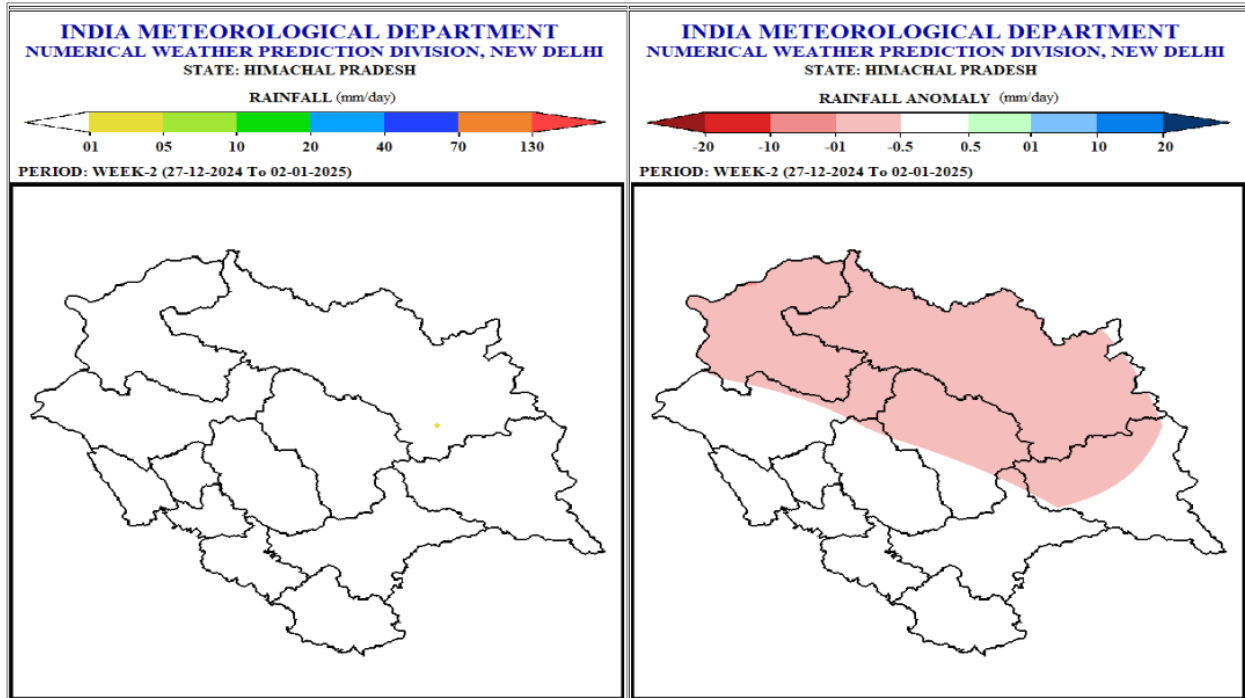
- Minimum Temperatures are very likely to be in the range of 2 to 6°C over many parts of lower hills/plains

& adjoining mid hills and in the range of -2 to 2°C over most parts of high hills & adjoining mid hills in the week 1.

- Minimum Temperatures are very likely to be below normal by 2-4°C over most parts of the State except some parts of Sirmaur, south Shimla, Solan & adjoining Bilaspur and south Una districts, where they are likely to be near normal in the week 1.

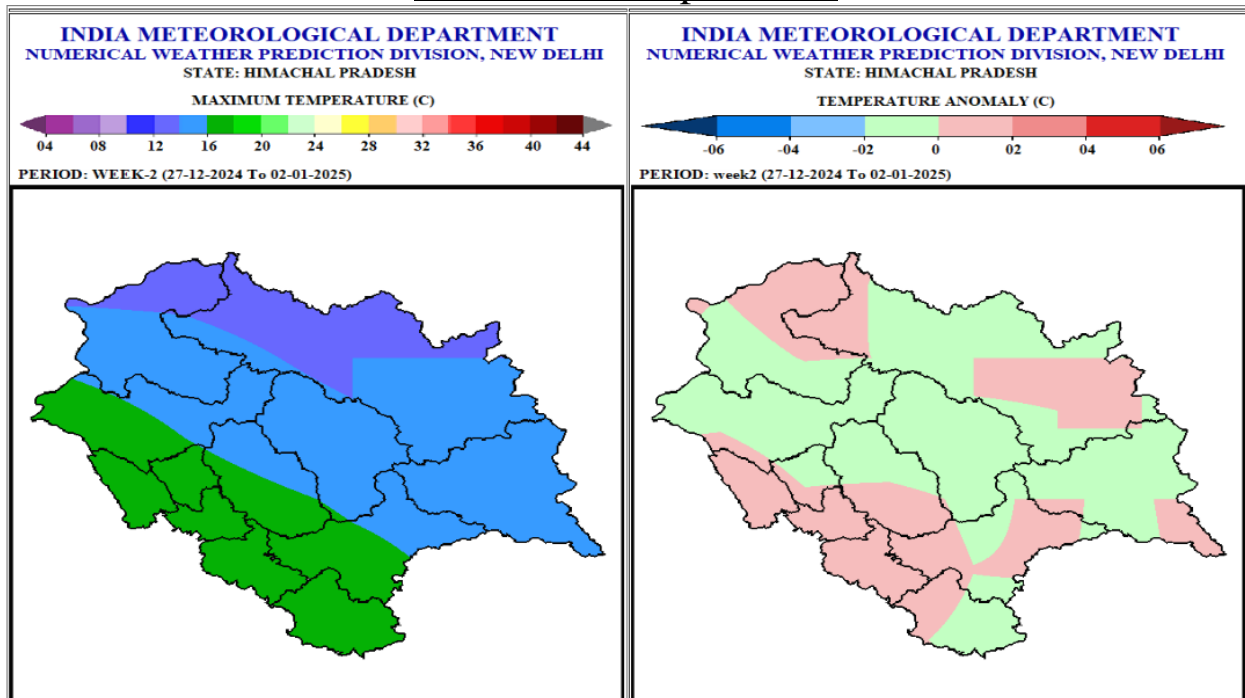
Week 2 (27th December 2024 –2nd January 2025)

Rainfall



- Dry weather very likely over most parts of the state in the week 2.
- Rainfall anomaly likely to be near normal over most parts of the state in the week 2.

Maximum Temperatures

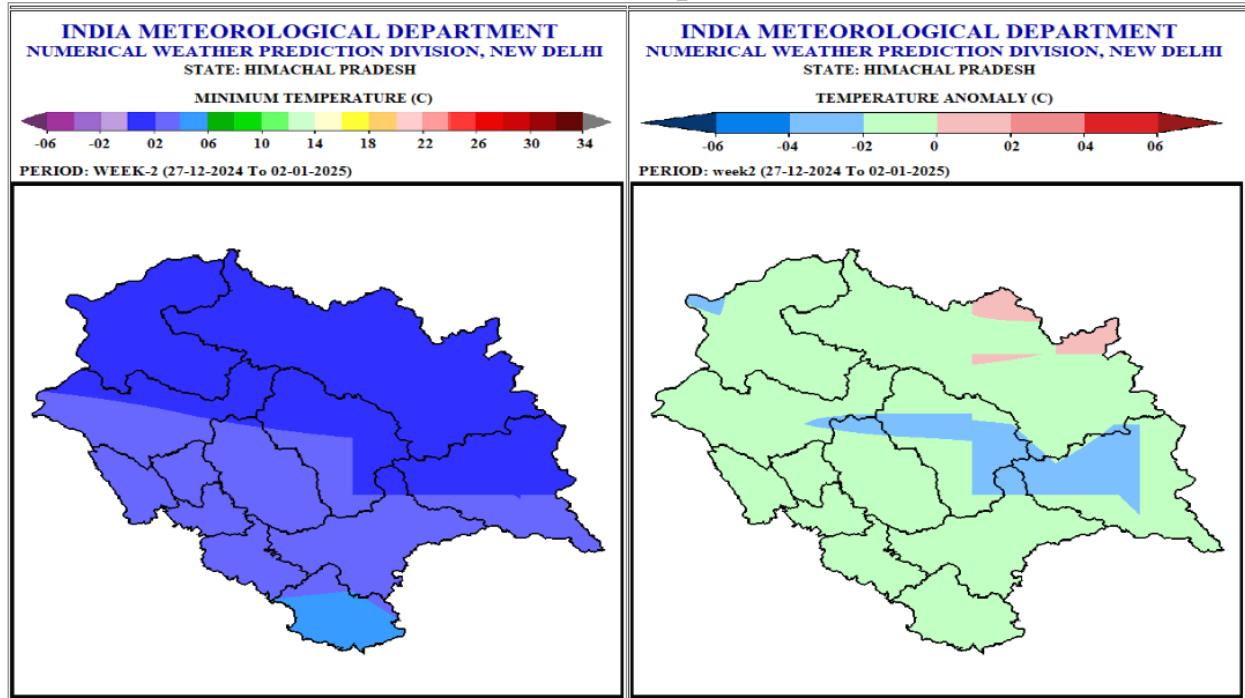


- Maximum Temperatures are very likely to be in the range of 14-16°C over most parts of the high hills

except some parts of Lahaul-Spiti & Chamba districts where it likely to be in the range of 12-14°C; in the range of 14-18°C over most parts of mid hills & adjoining lower hills and in the range of 16-18°C over remaining parts of lower hills/plains in the week 2.

- Maximum Temperatures very likely to be normal to near normal over most parts of the state in the week 2.

Minimum Temperatures



- Minimum Temperatures are very likely to be in the range of 2 to 6°C over many parts of lower hills/plains & adjoining mid hills and in the range of 0 to 2°C over most parts of high hills & adjoining mid hills in the week 2.
- Minimum Temperatures are very likely to be below normal in the week 2.

Outlook for next 2 weeks

Week	Max. Temp	Min. Temp.	Rainfall Anomaly
Week 3 3 rd January to 9 th January	Normal to Above Normal	Normal to Above Normal	Normal to Below Normal
Week 4 10 th January to 16 th January	Normal to Above Normal	Normal	Normal to Below Normal

Regards
Met Centre Shimla

For latest Weather Bulletin and warnings kindly visit following links

Website: <https://mausam.imd.gov.in/shimla/>

Facebook: <https://www.facebook.com/profile.php?id=100018411811087>

Twitter: <https://twitter.com/himachalmausam>

IG: www.instagram.com/metcentresml/